

# MONTHLY MEMBERSHIP PROGRESS REPORT

LOCATION INDIA

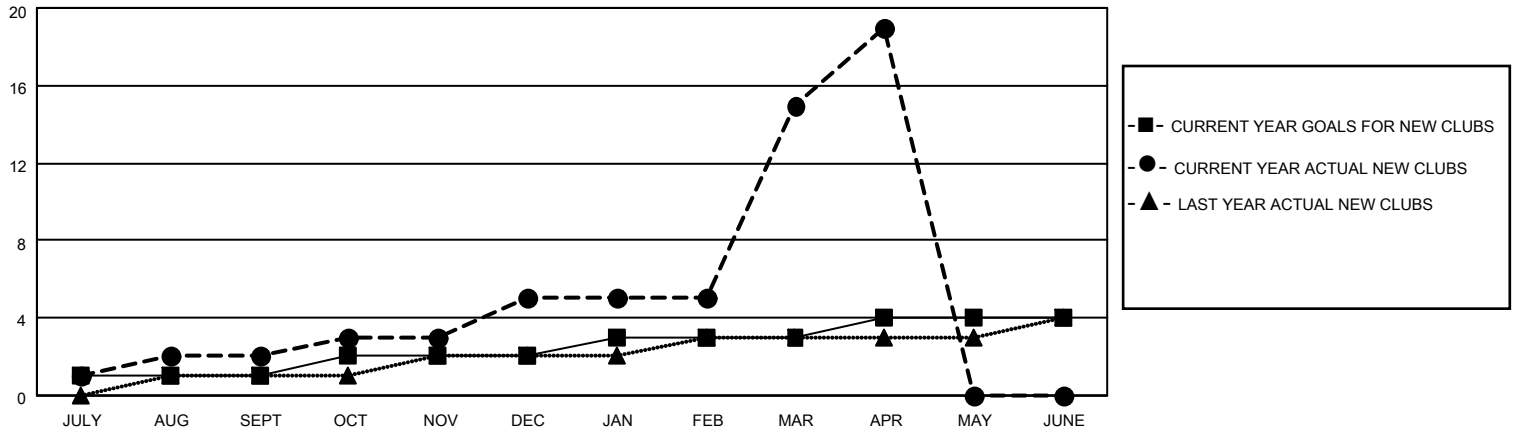
District 320 C

Results as of: 4/30/2021

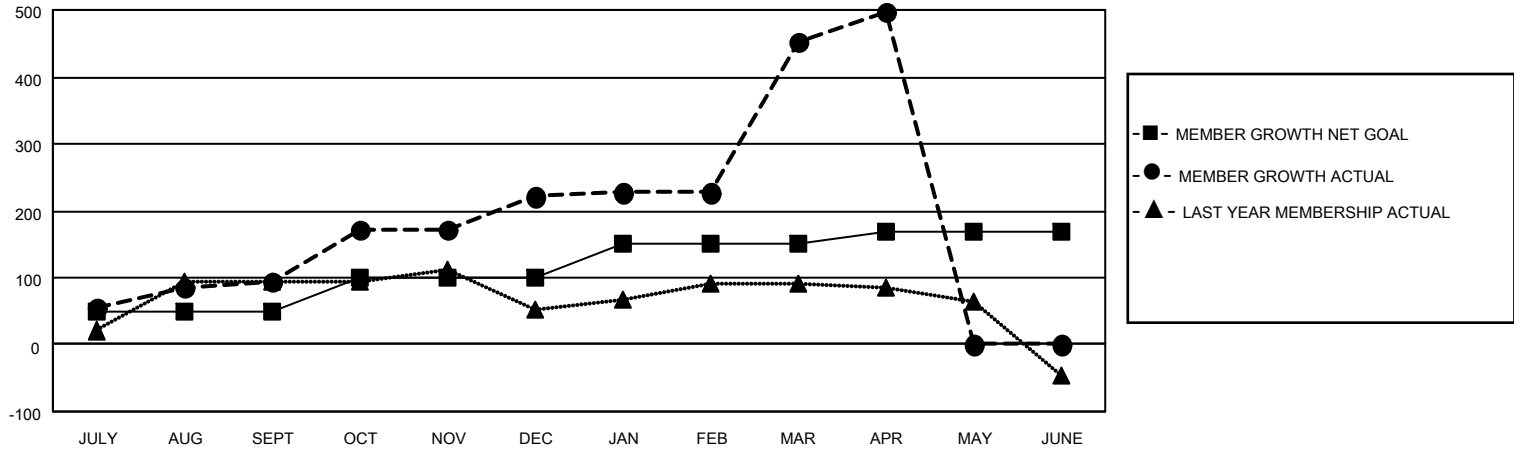
Clubs			
RESULTS FOR 2020-2021			
QUARTER	NEW CLUB GOAL	NEW CLUBS	DROPPED CLUBS
JULY/AUG/SEPT	1	2	0
OCT/NOV/DEC	1	3	0
JAN/FEB/MAR	1	10	0
APR/MAY/JUNE	1	4	0

Members			
RESULTS FOR 2020-2021			
QUARTER	MEMBER GROWTH NET GOAL	MEMBER GROWTH ACTUAL	DROPPED MEMBERS ACTUAL (including transfers)
JULY/AUG/SEPT	50	153	49
OCT/NOV/DEC	50	216	72
JAN/FEB/MAR	50	264	28
APR/MAY/JUNE	20	94	47

**GOALS AND ACTUAL NEW CLUBS CUMULATIVE**



**GOALS AND ACTUAL MEMBERS CUMULATIVE**



DROPPED CLUBS: 0	52 CLUBS OF 74 ADDED 1 OR MORE NEW MEMBERS	<p style="text-align: center;"><u>GENDER DISTRIBUTION</u></p> <p>MALE            1,802 (70.31%)</p> <p>FEMALE         761 (29.69%)</p>
<p style="text-align: center;"><u>DROPPED MEMBERS</u></p> <p>DECEASED                    9</p> <p>CLUB CANCELLED            0</p> <p>OTHER                         187</p> <hr/> <p>TOTAL                         196</p>	<p><a href="#">CLICK HERE FOR CUMULATIVE MEMBERSHIP DATA</a></p>	<p>TOTAL FAMILY UNIT MEMBERS            1,613</p> <p>FAMILY MEMBERS PAYING HALF DUES                                    917</p>